



# Floral Baskets & Planters



## Floral Baskets & Planters

Amethyst Horticulture offers a range of products and services primarily to the amenity and landscape industries and those organisations involved with enhancing our environment.

Our objective is to treat clients in a professional and personal way ensuring that we understand their needs and products.

Operating throughout the UK with distributors in North America, we have developed and produce a unique range of free-standing and fixed, self-watering containers.

These have become recognised as the most cost-effective method of providing colourful, high-impact displays in our communities.

All of our products and services, from enquiry to delivery, are subject to our rigorous quality control procedures. This is recognised with the ISO 9002 certification.

Nigel Fox  
Managing Director,  
Amethyst Horticulture Ltd.

## CONTENTS



Barrier Basket



Hanging Basket



Accessories



Pole Basket



Cascade Planter



Cosmopolitan Cube



Heritage Barrel



Wooden Planters

# BARRIER BASKET



For instant impact and significant labour savings, Barrier Baskets are the answer

Robust anti-vandal trough designed to withstand the harshest environments. Fully adjustable, galvanized brackets makes installation easier and more efficient and the removable and reusable liner allows for rapid, economical exchange of seasonal displays.

Built in 25 litre reservoir to conserve water, eliminating the need for daily watering and reduces routine maintenance costs.

The best way to turn those ugly railings into an asset!

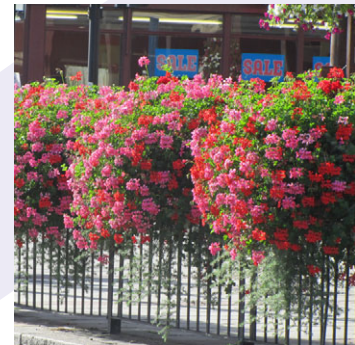




## HOW IT WORKS

The reservoir can be filled from any one of a number of easily-located filling points. High-quality capillary matting is used to transport and retain the water from the reservoir

We use a two-part system to ensure full effectiveness. A 'wick' is used initially to transfer the water from the reservoir which in turn hydrates a full size 'mat'. The reservoir requires filling, on average, twice per week.



## SPECIFICATION

*All figures are approximate*

Dimensions (WxHxD)	1000x290x400mm
Material	Medium density polyethylene (MDPE)
Weight	Unplanted 6kg
Capacity	Compost Volume 50 litres. Water reservoir 25 litres
Wall Thickness	5mm
Colours	Standard Colours are Black or Green. Other colours available on request and subject to a minimum order quantity.
Fixing Method	Galvanized adjustable steel brackets up to a maximum width of 100mm. Bespoke brackets available on request

# HANGING BASKET



## The only traditionally-styled self-watering basket on the market

Our hanging baskets have been designed to mimic the shape of a traditional wire basket whilst encompassing an easy-fill integral water reservoir:

Unique watering channel makes this basket easier to use than our competitors' versions. The integral reservoir with a capacity of 6 litres means this basket requires only two watering visits a week.

Complete with a 16", 3-leg galvanised chain. One length separates to enable easy emptying at the end of the season.



Telephone +44 (0) 1795 522828



## HOW IT WORKS

The reservoir can be filled from any one of a number of easily-located filling points. High-quality capillary matting is used to transport and retain the water from the reservoir

We use a two-part system to ensure full effectiveness. A 'wick' is used initially to transfer the water from the reservoir which in turn hydrates a full size 'mat'. The reservoir requires filling, on average, twice per week.



## SPECIFICATION

*All figures are approximate*

Dimensions	410mm diameter planting area. 530mm overall diameter
Material	Medium density polyethylene (MDPE)
Weight	Unplanted 6 KG. Planted approximately 25-30KG
Capacity	Compost Volume 15 litres. Water reservoir 6 litres
Wall Thickness	4mm
Colours	Green or Black. Other colours are available on request and subject to a minimum order quantity.
Fixing Method	Supplied with a 3 leg 400mm galvanised chain. 1 leg is detachable to aid emptying

# ACCESSORIES

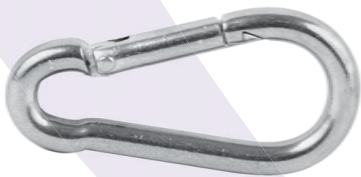


We offer a range of components used in the production and installation of floral displays:



## Cap Matting

We offer a high-performing capillary matting either in rolls or cut to size.



## Carabiner Shackle

Available in a range of sizes. This shackle makes installation safe and efficient on to brackets with a closed hook.

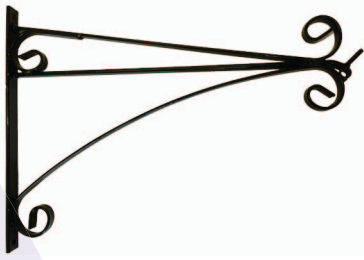


## D Shackle

Available in a range of sizes. Use for installing baskets to closed hooks or attaching chains to baskets.



inspired by  
**colour**



## Hanging Basket Bracket

We stock a range of 'off the shelf' brackets. We also offer a bespoke solution should this be needed.



## Pole Basket Bracket

This twin arm bracket provides support to the base of the pole basket. Discreet and easy to fix.



## Chains

We offer a range of heavy duty chains.



## Banding Straps

Manufactured from stainless steel these straps provide a quick and simple method for fixing brackets to lamp posts.



We offer a full planting and maintenance service.

# POLE BASKET



## Designed to complement our hanging baskets

With our trademark watering channel and unique slotting action to prevent the baskets from separating. Our pole baskets are manufactured from tough, high-quality recycled plastic and come complete with an integral reservoir for water conservation. They provide a very versatile low-maintenance display that can be put almost anywhere. They also feature a reusable liner for seasonal planting.

Pole baskets are an economical and environmentally friendly option to add high impact colour to both rural and urban communities.

Available in two sizes with reusable liners to ensure installation is efficient and safe.





## HOW IT WORKS

The reservoir can be filled from any one of a number of easily-located filling points. High-quality capillary matting is used to transport and retain the water from the reservoir

We use a two-part system to ensure full effectiveness. A 'wick' is used initially to transfer the water from the reservoir which in turn hydrates a full size 'mat'. The reservoir requires filling, on average, twice per week.



## SPECIFICATION

*All figures are approximate*

Dimensions	400mm or 600mm
Material	Medium density polyethylene (MDPE)
Weight	Unplanted 400mm. 3kg 600mm 5kg
Capacity	400mm: Compost volume 10 litres, water reservoir 5 litres. 600mm: Compost volume 15 litres, water reservoir 7 litres
Wall Thickness	4mm
Colours	Green or black
Fixing Method	Supported by brackets

# CASCADE PLANTER



A unique, tiered planter which allows you to create individual floral displays to suit your needs

This versatile planter has been designed to allow for a variety of uses. The 4-section base can be easily divided to provide a semi-circular style planter. Use 3 sections and the base will fit nicely around a corner.

The base can also be interconnected to provide a curved planter.

The central pole that supports the tiers can be completely removed or exchanged for a banner or hanging basket tree. Incorporating the scalloped edge that our products are known for, this new addition to our range is a market leader in free-standing planters.

This planter can be used in many different configurations – as a two-tier base only, as a full 1.2m diameter or as a semi-circular base.





## HOW IT WORKS

The reservoir can be filled from any one of a number of easily-located filling points. High-quality capillary matting is used to transport and retain the water from the reservoir

We use a two-part system to ensure full effectiveness. A 'wick' is used initially to transfer the water from the reservoir which in turn hydrates a full size 'mat'. The reservoir requires filling, on average, twice per week.



## SPECIFICATION

*All figures are approximate*

Dimensions	Overall base: 1.2m Overall height: 2.4m (can easily be reduced or extended to suit) Middle section: 600mm. Top section: 400mm
Material	Medium density polyethylene (MDPE)
Weight	Base: Unplanted 90kg. Middle section: Unplanted 5kg. Top section: Unplanted 3kg
Capacity	Base: Compost volume 80 litres approx. Water reservoir 80 litres per quarter section. Middle section: Compost volume 15 litres. Water reservoir 7 litres. Top section: Compost volume 10 litres. Water reservoir 5 litres.
Wall Thickness	4mm
Colours	Green or Black.
Fixing Method	Free standing

# COSMOPOLITAN CUBE



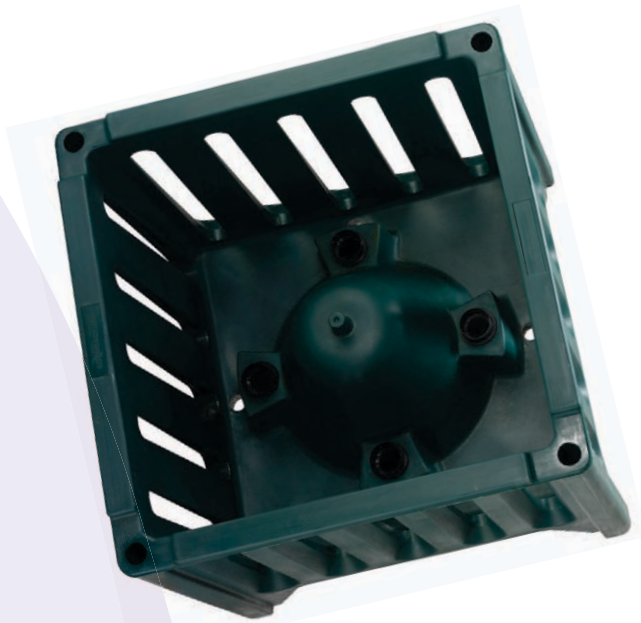
For instant impact there is nothing to compare to our unique range of Cosmopolitan planters.

Strength and durability have not been compromised to achieve a product that is the most versatile planter on the market. Constructed with an anti-vandal frame and complete with integral reservoir, the cube provides a high quality display with the benefit of a low cost maintenance regime. Stack one, two or even three high, this planter can be designed to suit any location whilst providing maximum impact.

The unique interconnection between reservoirs allows multi-stacking. When stacked, these planters can be interconnected so that one watering point fills 3 reservoirs. Manufactured from recycled plastic, these planters have a water reservoir of 40 litres and with a choice of four filling locations.



Telephone +44 (0) 1795 522828



## HOW IT WORKS

The reservoir can be filled from any one of a number of easily-located filling points. The depth of reservoir allow us to use a capillary leg. This plastic leg is reusable and mimics nature's method in the capillary action. Filled with the planting medium, water is transported to the plant efficiently.

The reservoir requires filling on average twice per week



## SPECIFICATION

*All figures are approximate*

Dimensions (WxHxD)	650x650x650mm
Material	Medium density polyethylene (MDPE)
Weight	Unplanted 15kg
Capacity	Compost volume 240 litres. Water reservoir 40 litres
Wall Thickness	5mm
Colours	Black or Green
Fixing Method	Free standing

# HERITAGE BARREL

This unique product is designed on the original whisky barrel.

Encompassing modern design ideas to increase durability and reduce maintenance costs this free standing planter provides an eye catching display at minimal cost.

Available in either a semi circular or full round, this new planter provides a low-cost solution.







## HOW IT WORKS

The reservoir can be filled from any one of a number of easily-located filling points. The depth of reservoir allow us to use a capillary leg. This plastic leg is reusable and mimics nature's method in the capillary action. Filled with the planting medium, water is transported to the plant efficiently.

The reservoir requires filling on average twice per week



## SPECIFICATION

*All figures are approximate*

Dimensions	Diameter 60cm
Material	Medium density polyethelene (MDPE)
Weight	Round 10kg, Semi-circular 5kg
Capacity	Round: Compost 70 litres, Water 40 litres Half round: Compost 35 litres, Water 20 litres
Wall Thickness	4mm
Colours	Black Brown
Fixing Method	Free standing

# WOODEN PLANTERS



We offer a range of bespoke wooden planters manufactured from pressure-treated softwood or hardwood.

Softwood planters are lined with plastic whilst those manufactured from hardwood are sold with a galvanised metal liner:

Hardwood planters are 'oiled' prior to delivery.



Telephone +44 (0) 1795 522828

inspired by  
**colour**



## HOW TO ORDER

We hold stock of all items and are able to respond quickly to your requests. Site visits can be arranged without any obligation. Please contact us either by telephone on **01795 522828** or e-mail **[sales@amethyst-horticulture.co.uk](mailto:sales@amethyst-horticulture.co.uk)**

For North America, please e-mail **[sales@amethyst-horticulture.com](mailto:sales@amethyst-horticulture.com)** for details of your local representative.



Amethyst Horticulture Ltd.

London Road, Newington, Sittingbourne, Kent ME9 7NY  
[sales@amethyst-horticulture.co.uk](mailto:sales@amethyst-horticulture.co.uk) [www.amethyst-horticulture.co.uk](http://www.amethyst-horticulture.co.uk)

Tel +44 (0) 1795 522828 Fax +44 (0) 522636